

ÜBERSICHTSZEICHNUNG
ASSEMBLY DRAWING

LAPIERRE



Overvolt AM 6.6 / 7.6 / 8.6 (MY21)

Datum: 18-12-2020

Version: 01



Overvolt AM 6.6 / 7.6 / 8.6 (MY21)

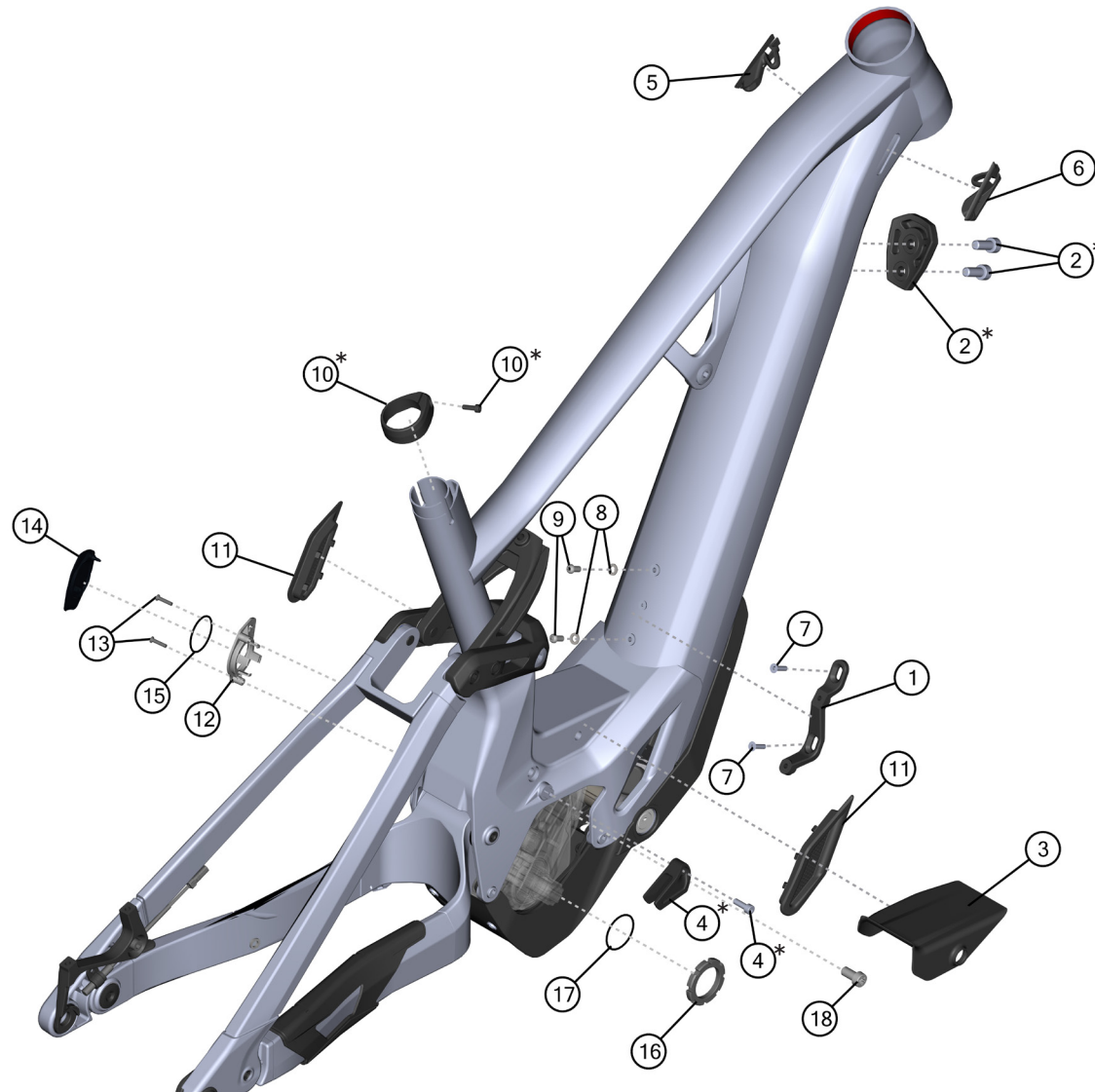
date: 18-12-2020

version: 01

ÜBERSICHTSZEICHNUNG

ASSEMBLY DRAWING main frame

LAPIERRE



Hinweis: Bei den Schrauben muss mittelfeste Gewindesicherung verwendet werden.
Rote Flächen müssen gefettet werden.

Note: use medium strength screw lock for screw threads.
red surfaces has to be greased.



Overvolt AM 6.6 / 7.6 / 8.6 (MY21)

date: 18-12-2020

version: 01

ÜBERSICHTSZEICHNUNG

ASSEMBLY DRAWING main frame

LAPIERRE

BOM-ID	Description	Specification	Torque	Drawing no. supplier	Item no.	QTY
1	Bottle cage bracket			7134-03006-0941	FROT0118	1
2*	Hexagon socket screw (set incl. fork bumper)	Hex 6 - M8 x 20 mm	22 Nm	WI-38L-118	FROT0084	2
2*	Fork bumper (set incl. screw)			WI-38L-118	FROT0084	1
3	Top motor Cover			WI-38L-117	FROT0083	1
4*	Hexagon socket screw (set incl. chain guide)	Hex 4 - M5 x 12 mm	6 Nm	WI-38L-95	CG0016	1
4*	Chain guide (set incl. screw)			WI-38L-95	CG0016	1
5	Cable inlet left side			WI-38L-104	FROT0079	1
6	Cable inlet right side			WI-38L-103	FROT0078	1
7	Counter sunk screw	Hex 3 - M5 x 12 mm	6 Nm	7596-09005-0005	FRSC0076	2
8	Spacer	ø 5,3 x 11 x 1,2 mm		7600-02006-0901	FROT0121	2
9	Lens head screw	TX25 - M5 x 12 mm	6 Nm	7596-01001-0132	FRSC0077	2
10*	Seatclamp (set incl. screw)	Ø 34,9 mm		997134-12001-0033	SC0008	1
10*	Hexagon socket screw (set incl. seatclamp)	Hex 4 - M5 x 12 mm	6 Nm	7596-08004-0104	SC0008	1
11	Cooling grids			WI-38L-124	FROT0117	1
12	Plug holder			Bosch 1270.015.654	FROT0184	1
13	Screw	M 3 x 14 mm	1 Nm	Bosch F04N.002.663	FRSC0100	2
14	Plug Cover			Bosch 1270.016.725	FROT0186	1
15	O-Ring			Bosch 1270.016.109	FROT0185	1
16	Lockring			Bosch 1270.014.085	FROT0180	1
17	O-Ring			Bosch 1270.016.119	FROT0181	1
18	Screw for drive unit	M 8 x 16 mm	22 Nm	Bosch 1270.016.470	FRSC0097	6



Overvolt AM 6.6 / 7.6 / 8.6 (MY21)

date: 18-12-2020

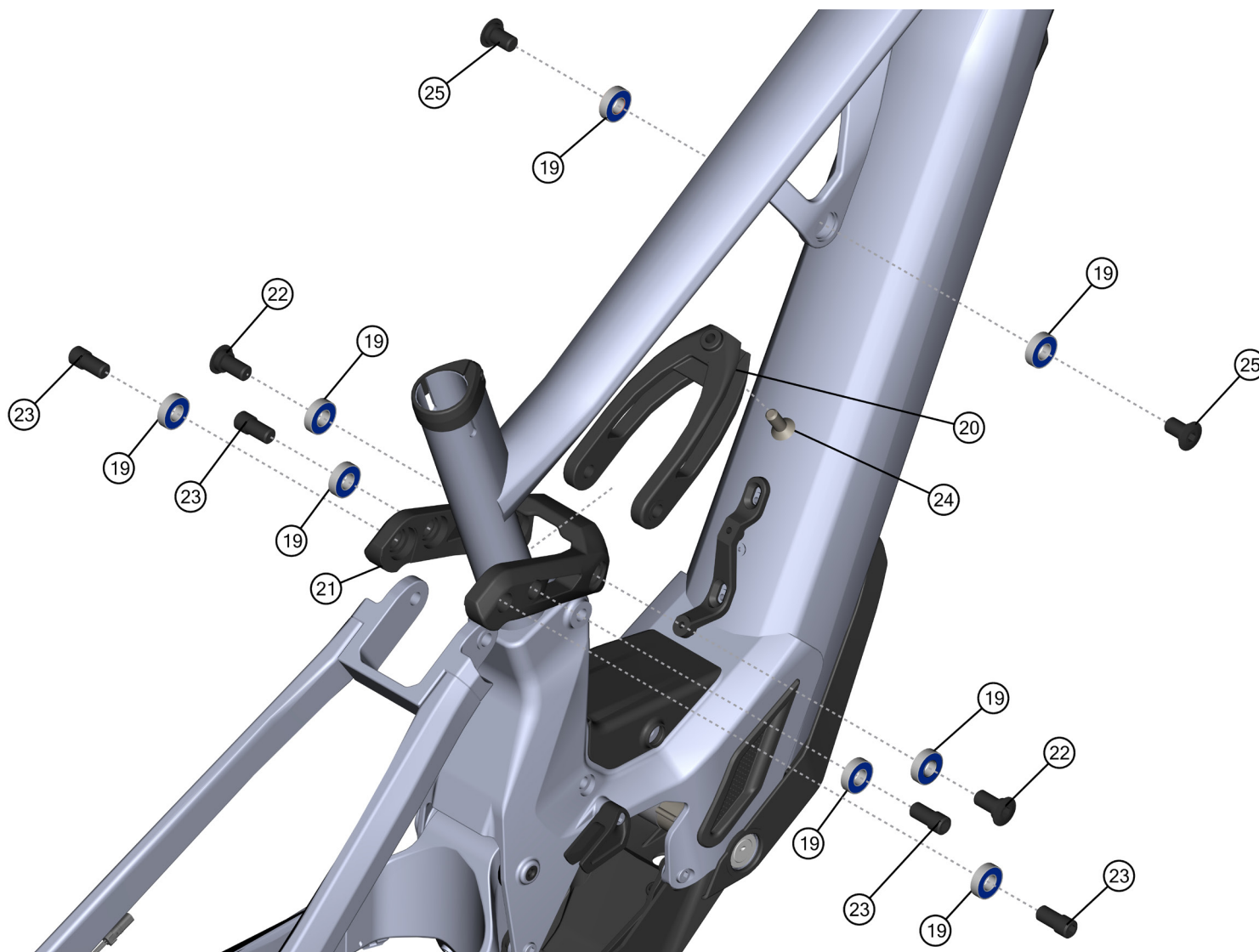
version: 01

ÜBERSICHTSZEICHNUNG

ASSEMBLY DRAWING

rocker

LAPIERRE



Hinweis: Bei den Schrauben muss mittelfeste Gewindesicherung verwendet werden. Rote Flächen müssen gefettet werden.

Note: use medium strength screw lock for screw threads. red surfaces has to be greased.



Overvolt AM 6.6 / 7.6 / 8.6 (MY21)

date: 18-12-2020

version: 01

ÜBERSICHTSZEICHNUNG

ASSEMBLY DRAWING rocker

LAPIERRE

BOM-ID	Description	Specification	Torque	Drawing no. supplier	Item no.	QTY
19	Bearing 6900 2RS	ø 10 x ø 22 x 6 mm		7287-01004-0025	FROT0119	8
20	Rocker Link-top			7321-11004-0008	FROT0123	1
21	Rocker Link			7321-03009-0008	FROT0124	1
22	Bolt for Rocker	Hex 6 - ø14 (M10) x 17,5 mm	14 - 18 Nm	7760-04008-0019	FROT0125	2
23	Bolt for Rocker	Hex 6 - ø12 (M10) x 17 mm	14 - 18 Nm	7760-04008-0020	FROT0126	4
24	Counter sunk screw	Hex 5 - M8 x 30 mm	22 Nm	7596-08001-0908	FRSC0078	1
25	Bolt for Rocker	Hex 6 - ø14 (M10) x 17,5 mm	14 - 18 Nm	7760-04008-0021	FROT0120	2



Overvolt AM 6.6 / 7.6 / 8.6 (MY21)

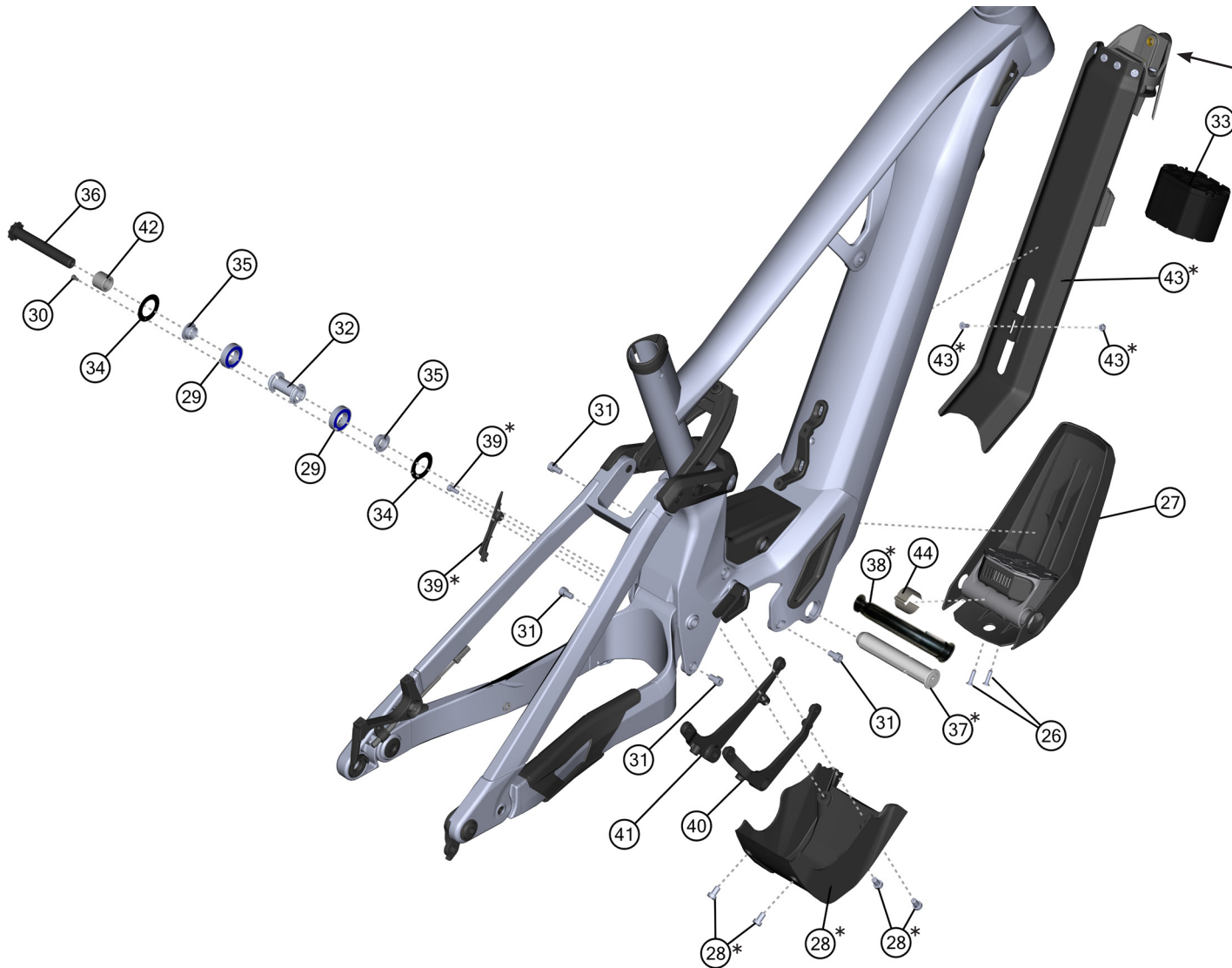
date: 18-12-2020

version: 01

ÜBERSICHTSZEICHNUNG

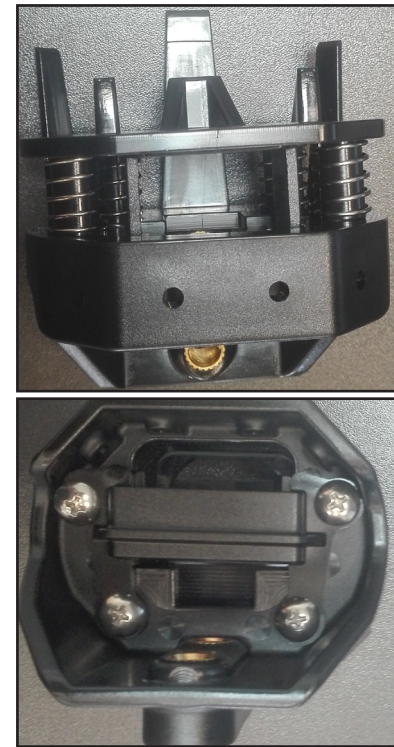
ASSEMBLY DRAWING battery holder

LAPIERRE



Hinweis: Bei den Schrauben muss mittelfeste Gewindesicherung verwendet werden.
Rote Flächen müssen gefettet werden.

Note: use medium strength screw lock for screw threads.
red surfaces has to be greased.



Overvolt AM 6.6 / 7.6 / 8.6 (MY21)
date: 18-12-2020
version: 01



ÜBERSICHTSZEICHNUNG

ASSEMBLY DRAWING battery holder

LAPIERRE

BOM-ID	Description	Specification	Torque	Drawing no. supplier	Item no.	QTY
26	Counter sunk screw	Hex 2,5 - M4 x 16 mm	3 Nm		FRSC0085	2
27	Battery Handle			WI-38L-115	FROT0082	1
28*	Hexagon socket screw (set incl. motor plastic guard)	Hex 5 - M6 x 10 mm	11 Nm	WI-38L-114	FROT0081	4
28*	Motor plastic guard (set incl. screw)			WI-38L-114	FROT0081	1
29	Bearing 6902 2RS	ø 15 x Ø 28 x 7 mm		7287-01004-0012	FROT0128	2
30	Hexagon socket screw	Hex 3 - M4 x 6 mm	1.5 Nm	7596-09006-0007	FRSC0079	1
31	Hexagon socket screw	Hex 5 - M6 x 10 mm	11 Nm	7596-08002-0930	FRSC0080	4
32	Spacer	ø 14 x Ø 23 x 40 mm		7764-02001-0050	FROT0129	1
33	Battery Spacer			WI-38L-116	FROT0096	1
34	Spacer	ø 20 x Ø 32 x 1,1 mm		7764-02001-0026	FROT0130	2
35	Spacer	ø 12 x Ø 20 x 7,5 mm		7764-01006-0104	FROT0131	2
36	Main bolt	Hex 6 - ø12 (M12) x 84 mm	18 - 20 Nm	7760-04008-0017	FROT0132	1
37*	Key lock (depending which is installed)			XY2020-DY02-002	LO0001	1
38*	Battery Threaded axle (set incl. screw + o-ring) (depending which is installed)			G57-A001	FROT0115	1
39*	Side cover (set incl. screw)			WI-38L-122	FROT0116	1
39*	Hexagon socket screw (set incl. side cover)	Hex 3 - M4 x 10 mm	1.5 Nm	WI-38L-122	FROT0116	1
40	Motor bracket (right side)			7134-07009-0946	FROT0133	1
41	Motor bracket (left side)			7134-07009-0947	FROT0134	1
42	Bushing	ø 12 x Ø 18 x 15,5 mm		7764-02001-0051	FROT0135	1
43*	Battery Holder Set			WI-38L-107	FROT0080	1
43*	Counter sunk screw (included in the set battery holder)	Hex 2,5 - M4 x 10 mm	1.5 Nm	WI-38L-107	FROT0080	1
43*	Hexagon nut with flange (included in the set battery holder)	M4		WI-38L-107	FROT0080	1
44	Inox clip			7134-04021-0001	SM1719	1



Overvolt AM 6.6 / 7.6 / 8.6 (MY21)

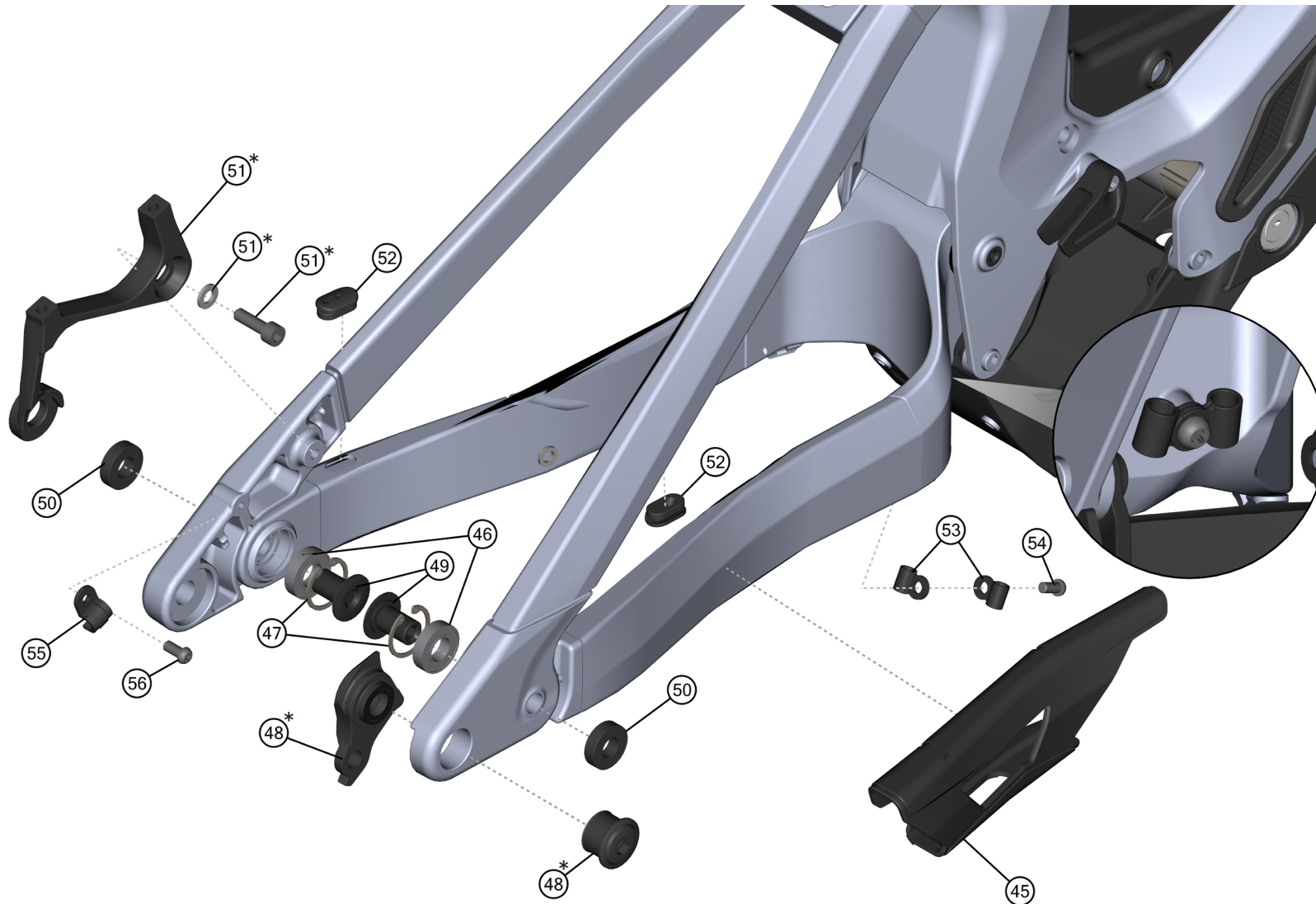
date: 18-12-2020

version: 01

ÜBERSICHTSZEICHNUNG

ASSEMBLY DRAWING dropout

LAPIERRE



Hinweis: Bei den Schrauben muss mittelfeste Gewindesicherung verwendet werden. Rote Flächen müssen gefettet werden.

Note: use medium strength screw lock for screw threads. red surfaces has to be greased.



Overvolt AM 6.6 / 7.6 / 8.6 (MY21)
date: 18-12-2020
version: 01

ÜBERSICHTSZEICHNUNG

ASSEMBLY DRAWING dropout

LAPIERRE

BOM-ID	Description	Specification	Torque	Drawing no. supplier	Item no.	QTY
45	Chain protection			WI-38L-120	SM1712	1
46	Bearing 6901 2RS	ø 12 x Ø 24 x 6 mm		7287-01004-0011	FROT0136	2
47	Lock ring	Ø 25,9 mm		7667-12001-0002	FROT0137	2
48*	Hanger + Nut				FRHG0061	1
49	Bolt	TX30 - ø 12 x Ø 23 x 21 mm	14 - 18 Nm	7760-04008-0018	FROT0141	2
50	Washer STW-10			7667-12001-0003	FROT0142	2
51*	Disconnect brakemount (set incl. screw and washer))			Hodaka 997127-01002-0005	FROT0171	1
51*	Hexagon socket screw (set incl. Disconnect brake-mount and washer)	Hex 5 - M 6 x 16 mm	11 Nm	Hodaka 997127-01002-0005	FROT0171	1
51*	Washer (set incl. Disconnect brakemount and screw)	ø 6,4 mm		Hodaka 997127-01002-0005	FROT0171	1
52	Cable guide	SW415		7665-07002-0001	FROT0154	2
53	Cable guide for 1 cable			Yung Fang	SM0002	2
54	Lens head screw	TX25 - M 5 x 12 mm	6 Nm	Würth	SM1190	1
55	Clip holder			Bosch 1270.016.038	EL0276	1
56	Screw			Bosch 1270.016.148	EL0277	1



Overvolt AM 6.6 / 7.6 / 8.6 (MY21)

date: 18-12-2020

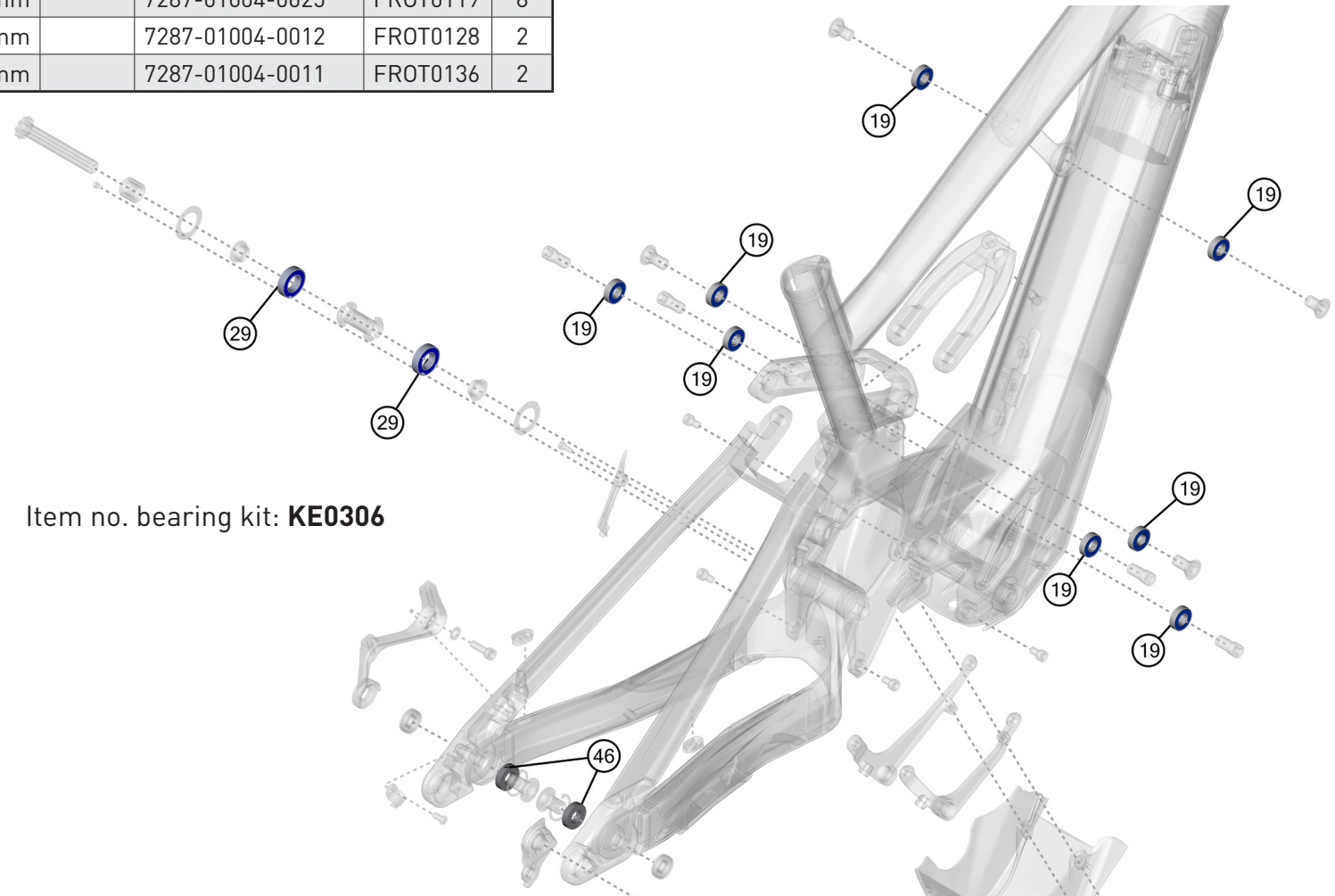
version: 01

ÜBERSICHTSZEICHNUNG

ASSEMBLY DRAWING bearing kit

LAPIERRE

BOM-ID	Description	Specification	Torque	Drawing no. supplier	Item no.	QTY
	Bearing kit				KE0306	1
19	Bearing 6900 2RS	ø 10 x ø 22 x 6 mm		7287-01004-0025	FROT0119	8
29	Bearing 6902 2RS	ø 15 x ø 28 x 7 mm		7287-01004-0012	FROT0128	2
46	Bearing 6901 2RS	ø 12 x ø 24 x 6 mm		7287-01004-0011	FROT0136	2



Item no. bearing kit: **KE0306**

Overvolt AM 6.6 / 7.6 / 8.6 (MY21)

date: 18-12-2020

version: 01

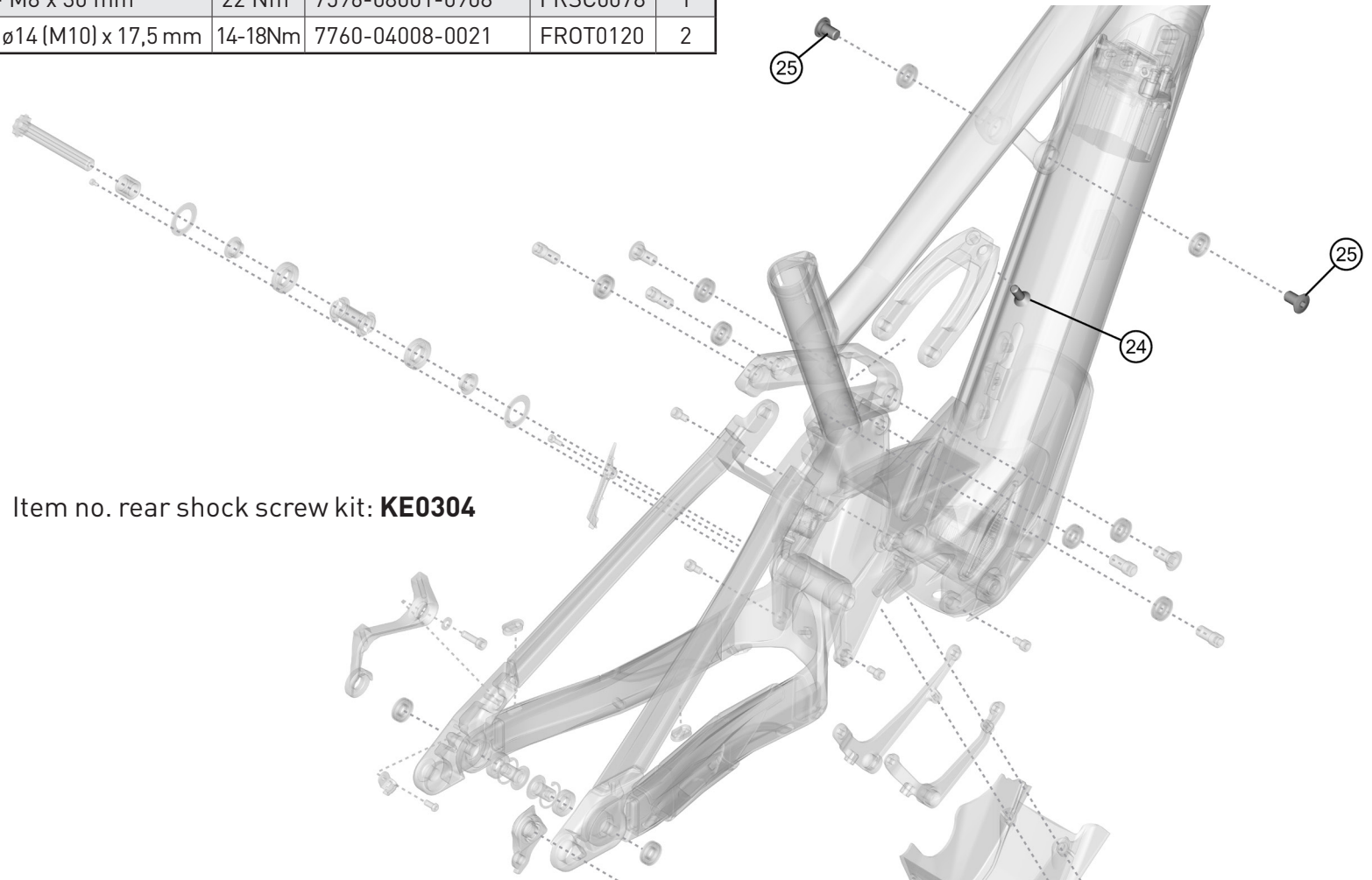


ÜBERSICHTSZEICHNUNG

ASSEMBLY DRAWING rear shock screw kit

LAPIERRE

BOM-ID	Description	Specification	Torque	Drawing no. supplier	Item no.	QTY
	Rear shock screw kit				KE0304	1
24	Counter sunk screw	Hex 5 - M8 x 30 mm	22 Nm	7596-08001-0908	FRSC0078	1
25	Bolt for Rocker	Hex 6 - \varnothing 14 (M10) x 17,5 mm	14-18Nm	7760-04008-0021	FROT0120	2



Overvolt AM 6.6 / 7.6 / 8.6 (MY21)

date: 18-12-2020

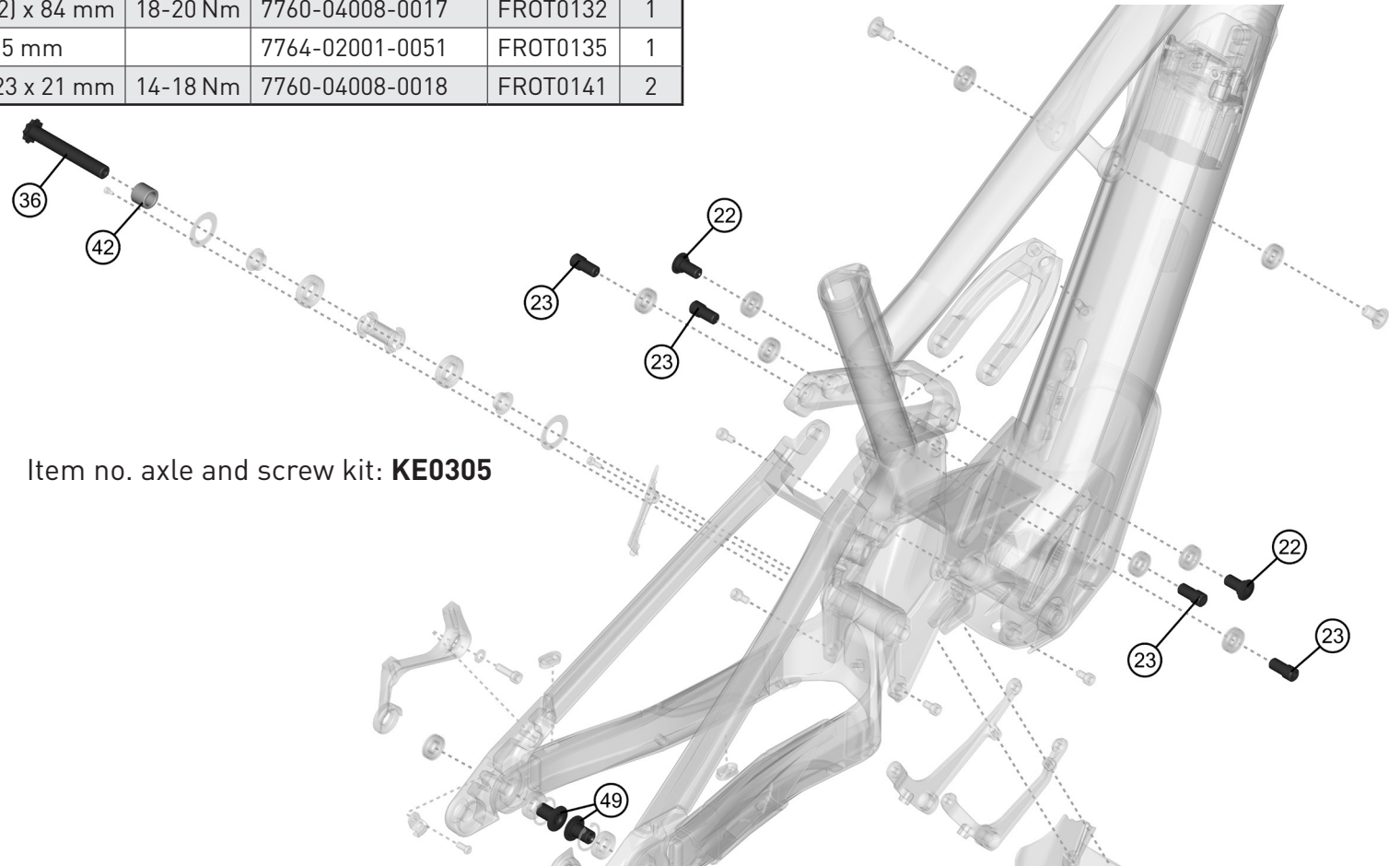
version: 01

ÜBERSICHTSZEICHNUNG

ASSEMBLY DRAWING axle & screw kit

LAPIERRE

BOM-ID	Description	Specification	Torque	Drawing no. supplier	Item no.	QTY
	Axle & srew kit				KE0305	1
22	Bolt for Rocker	Hex 6 - \varnothing 14 (M10) x 17,5 mm	14-18 Nm	7760-04008-0019	FROT0125	2
23	Bolt for Rocker	Hex 6 - \varnothing 12 (M10) x 17 mm	14-18 Nm	7760-04008-0020	FROT0126	4
36	Main bolt	Hex 6 - \varnothing 12 (M12) x 84 mm	18-20 Nm	7760-04008-0017	FROT0132	1
42	Bushing	\varnothing 12 x \varnothing 18 x 15,5 mm		7764-02001-0051	FROT0135	1
49	Bolt	TX30 - \varnothing 12 x \varnothing 23 x 21 mm	14-18 Nm	7760-04008-0018	FROT0141	2



Item no. axle and screw kit: **KE0305**



Overvolt AM 6.6 / 7.6 / 8.6 (MY21)

date: 18-12-2020

version: 01

ÜBERSICHTSZEICHNUNG

ASSEMBLY DRAWING

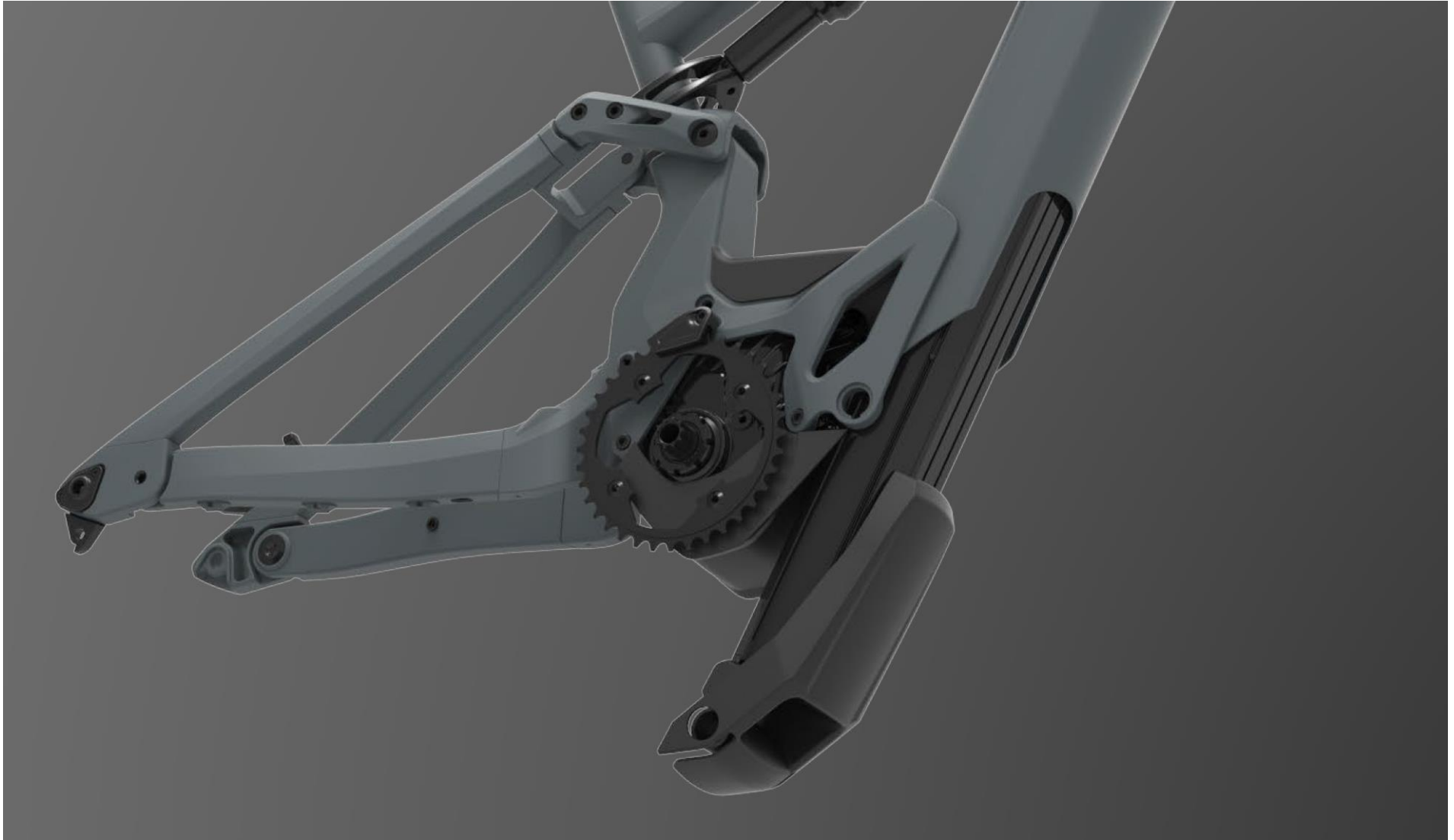
LAPIERRE

FACT SHEET:	
SHOCK LENGTH:	205 MM
SHOCK HARDWARE TOP:	Ø 8 x 15
SHOCK HARDWARE BOTTOM:	Ø 8 x 15
HEADSET TOP:	ZS 56
HEADSET BOTTOM:	ZS 56
SEATPOST DIAMETER:	31,6 MM
CLAMP INNER DIAMETER:	34,9 MM
BOTTOM BRACKET:	-----
KICKSTAND:	-----
ISCG STANDARD:	-----
CARRIER MOUNT:	NO
FENDER COMPATIBLE:	NO

DROPPER SEATPOST READY:	YES
WATTERBOTTLE MOUNT:	YES
MAXIMUM PERMISSIBLE TOTAL WEIGHT:	120 KG
MAXIMUM TIRE SIZE:	
WHEEL SIZE:	27,5" / 29"
QUICK RELEASE LENGTH:	180 MM
OVER-LOCKNUT DIMENSION (O.L.D.):	164 MM
FD CLAMP SIZE:	-----
FD TYPE:	-----
ENGINE:	BOSCH GEN4 CX
BATTERY:	BOSCH 625 WH
DISPLAY:	BOSCH PURION



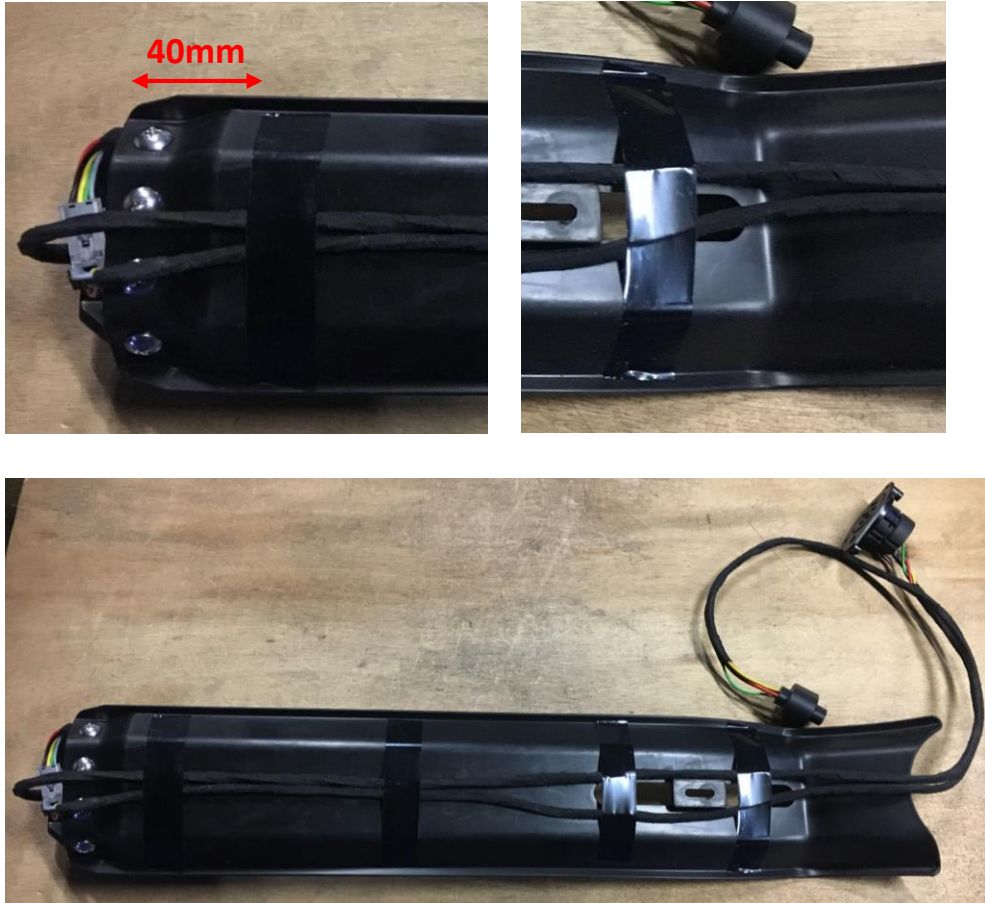
Overvolt AM 6.6 / 7.6 / 8.6 (MY21)
date: 18-12-2020
version: 01



STEP	TOOLS	PICTURE	INSTRUCTIONS
<p>1</p> <p>Battery rack pre-assembly</p>	Philips screwdriver		<ol style="list-style-type: none"> 1. Clip the Bosch connector on the connector plate 2. Place the 4 springs on the connector plate domes 3. Screw the connector plate holder on the connector plate, through the battery bracket 4. Screw the battery rail on the battery bracket <p>4x Self-tapping screw M5x10 (included in Battery Holder Set): FROT0080</p> <p>4x Self-tapping screw M5x10 (included in Battery Holder Set): FROT0080</p>

Parts: Battery Holder Set: FROT0080


WI-38L-107-1	GEN4 Top battery bracket		PA66	Black
WI-38L-107-2	GEN4 Connector plate		PA66	Black
WI-38L-107-3	GEN4 Connector plate holder		PA66	Black
WI-38L-107-4	GEN4 Battery rail		PP+TPR	Black
WI-38L-107-5-SPRING	GEN4 Battery spring 4pcs		Spring steel	Silver

STEP	TOOLS	PICTURE	INSTRUCTIONS
<p>2</p> <p>Power cables taping</p>	<p>PVC insulating tape Scissors</p>		<ol style="list-style-type: none"> 1. On the connector side, tape the power cables onto the battery rail (back side) at 40mm from the end of the battery rail. 2. On the opposite side, tape the power cables where the battery rail is bended 3. Put 2 more tape pcs in the middle at equal distance

STEP	TOOLS	PICTURE	INSTRUCTIONS
<p>3</p> <p>Battery rack installation</p>	<p>HEX wrench 6mm HEX wrench 2.5mm Socket wrench 7mm</p>		<ol style="list-style-type: none"> 1. Route the display cable in the DT, on right side 2. Slide the battery rack into the DT up to the oblong holes 3. Insert the M8 screws in the battery bracket, through the DT and the fork bumper 4. Pull the battery rack in maximum <u>bottom position</u> in the oblong holes (top position when the bike is upside-down) 5. Tight the M8 screws 6. Place and tight the M3 screw and nut <p>Screw M4x10 + nut with flange (included in Battery Holder Set): FROT0080</p>

Parts: Fork Bumper (set incl. screw M8x20 + washer): FROT0084

WI-38L-118	GEN4 Fork Bumper		PA66	Black
------------	------------------	--	------	-------

STEP	TOOLS	PICTURE	INSTRUCTIONS
<p>4 Cable routing</p>			<ol style="list-style-type: none"> 1. Route the cables after installing the battery rack (step 3) (When possible. Some bikes have quick hose connection which makes them impossible to route afterwards) 2. Route the cables from bottom to top 3. Route the cables in the DT as following (keep the cables on the sides of the battery rack): <ul style="list-style-type: none"> - Right side: seatpost cable + display cable - Left side : brake hose + derailleur cable <p>NB: It's very important to not cross the cables with each other inside the DT. If cables are crossed, it may result in difficult battery assembly</p>

STEP	TOOLS	PICTURE	INSTRUCTIONS
<p>5 DU assembly</p>			<ol style="list-style-type: none"> 1. Assemble the drive unit 2. Assemble the motor cover

Parts: **Motor Cover (set incl. screw M6x10): FROT0081**

WI-38L-114	GEN4 Motor Cover		PP+TPR	Black
------------	------------------	---	--------	-------

STEP	TOOLS	PICTURE	INSTRUCTIONS
<p>6</p> <p>Battery handle assembly</p>	<p>HEX wrench 3mm HEX wrench 2.5mm</p> <p>Battery Spacer (set incl. screw M4x16): FROT0096</p>	<p>Inox clip: SM1719</p> <p>Screw M4x16: FRSC0085</p>	<ol style="list-style-type: none"> 500Wh BATTERY: screw the 500Wh battery spacer onto the battery Clip together the battery handle and the lock axle plate (a soft mallet may be used to adjust the 2 parts, use a protection to not scratch the parts). Make sure the screw holes are concentric Slide the battery handle into the battery (or battery spacer) rails Screw the battery handle to the battery (or battery spacer). Beware of the battery plug orientation

Parts:

WI-38L-115-A	GEN4 Battery handle		PP	Black
WI-38L-115-B	GEN4 Lock axle plate		PA66	Black
WI-38L-116	GEN4 500Wh Battery spacer		PA66	Black

Battery Handle: FROT0082

Battery Handle: FROT0082

Battery Spacer: FROT0096

STEP	TOOLS	PICTURE	INSTRUCTIONS
<p>7</p> <p>Rubber guides installation</p>	<p>Brake cleaner (spray)</p>		<ol style="list-style-type: none"> 1. Spray some brake cleaner on the rubber guide rails 2. Insert the rubber guides into the battery rails 3. Adjust the rubber guides in correct position: <ul style="list-style-type: none"> - 1pc at 60mm from battery end - 1pc at battery handle level

Parts: Battery Holder Set: FROT0080

WI-38L-107-6	GEN4 Battery rubber guide 2pcs		TPR70	Black
--------------	-----------------------------------	--	-------	-------

STEP	TOOLS	PICTURE	INSTRUCTIONS
<p>8</p> <p>Battery installation</p>			<ol style="list-style-type: none"> 1. Slowly insert the battery into the DT parallel with the DT axis 2. Slightly lift up the battery to not hook the DT edges 3. Press down onto the battery handle 4. Insert the battery lock: lock index, lock pin and frame groove must be aligned

Parts: **Battery Lock: FROT0115 or LO0001**

LPBATLK	GEN4 Battery lock		AL alloy	Silver
---------	-------------------	--	----------	--------